

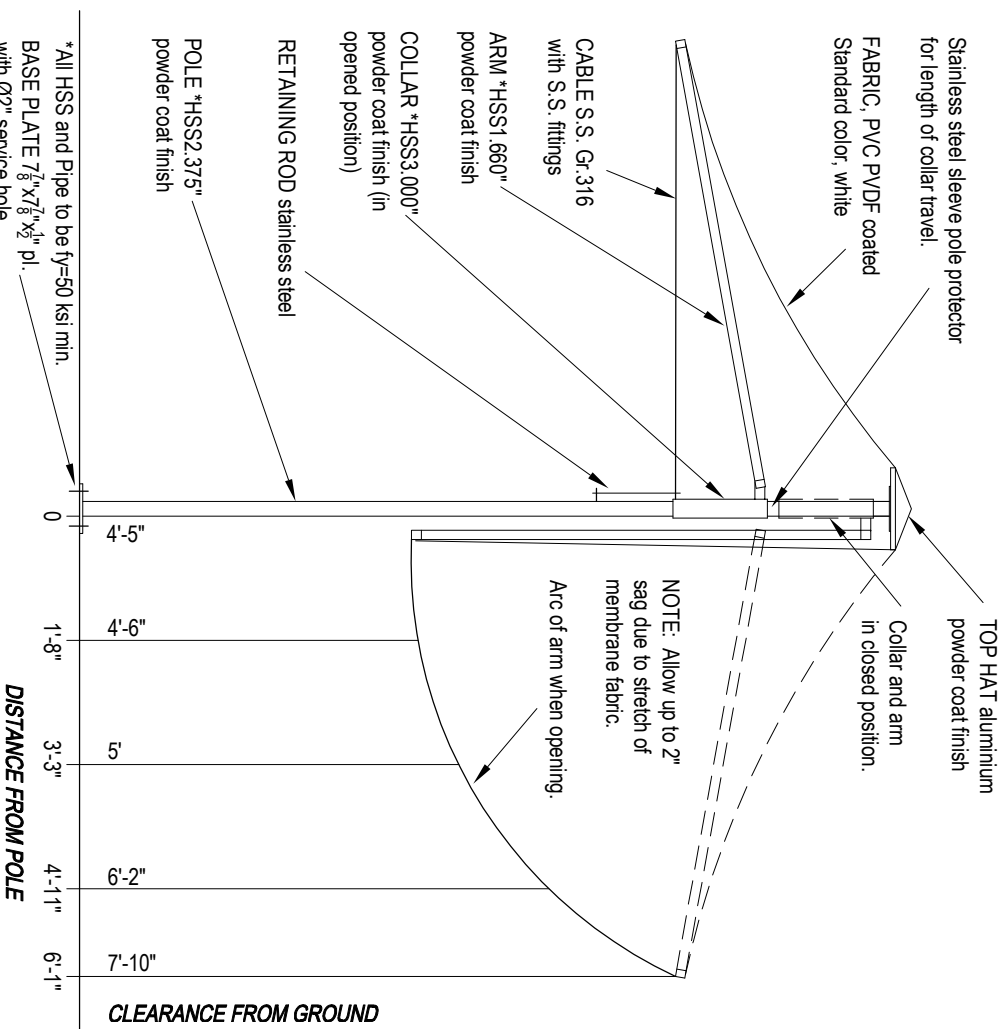
Elevation

CENTRA SQUARE 8'-10" - CS27

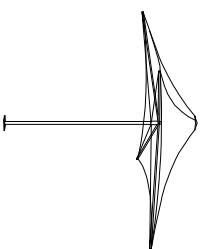
Designed to 90mph, Exp B
 Rated when umbrella is fully erected.
 Umbrella weight: 115 lb

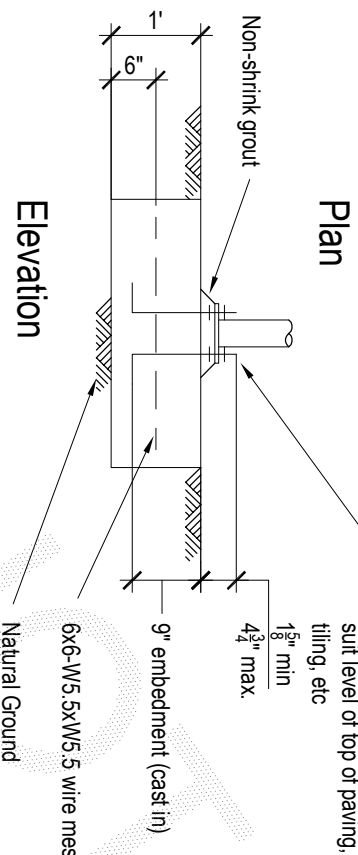
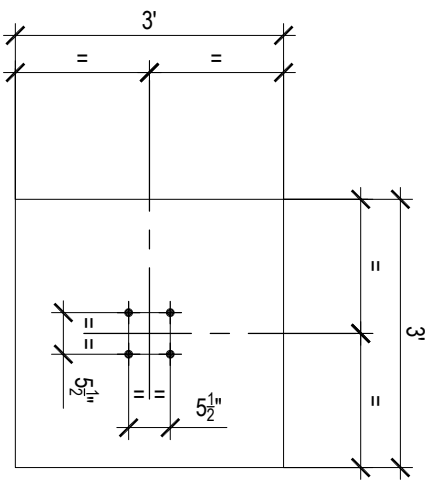
Overall dimensions represent clearance dimensions for the complete umbrella. Membrane dimensions differ, depending on variations in tensioning and fabrication. All dimensions are nominal and have a tolerance of +/- 2".

Note : The umbrellas must be closed and tied before wind speeds reach gusts of 60mph (100km/h) Refer note on Specification - Umbrella Design.



8'-10" Center Support Square Umbrella Centra - Model CS27

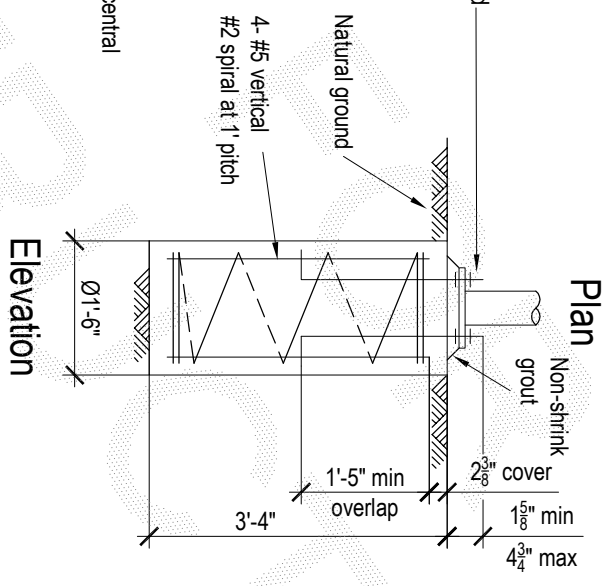
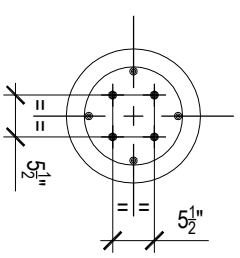




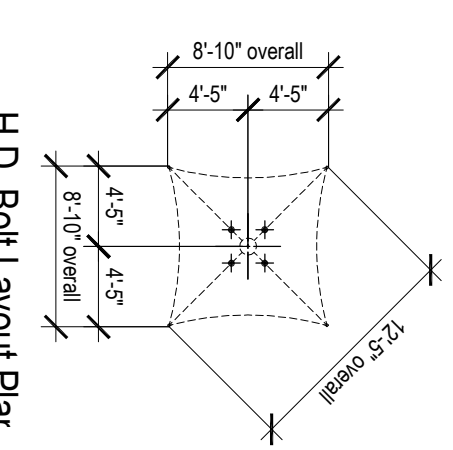
CS27 - Pad Footing

- Non-shrink grout
- Bolt projection
- 1 5/8" min.
- 4 3/4" max.
- Embedment
- 4 1/2" min.
- 5 1/2" o.c.
- 4- 1/2" H.D. bolts to be threaded rod grade F1554 Gr. 36 hot dipped galvanized, or stainless steel Gr. 316. Supplied with nuts, washers and leveling nuts.
- Chemical anchors, at 5 1/2" x 5 1/2" centers to be 'Hilti HVU', or engineer approved equivalent, and to be installed in accordance with the manufacturer's instructions. Hole to be clean and dry at time of installation.

Chemical Anchor Detail



CS27 - Pier Footing



H.D. Bolt Layout Plan

Not to scale

- Notes:**
- Designed to 90mph, Exp B
 - Assumed soil conditions:
 - Pad - bearing capacity 14.5 psf
 - Pier - cu=7.25 psf (stiff clay)

- Minimum 2 3/8" cover to all reinforcement
- Concrete strength - f'c 3600 psi.
- 3" aggregate size
- Slump 2 1/2"

- Anchor bolt location tolerances per Australian Standard AS 4800-1998**
- 3mm for anchor bolt centers within an anchor bolt group.
 - 6mm for adjacent anchor bolt group centers.
 - Maximum accumulation of 6mm per 30m not to exceed a total of 25mm.
 - 6mm from anchor bolt group center to column line center.