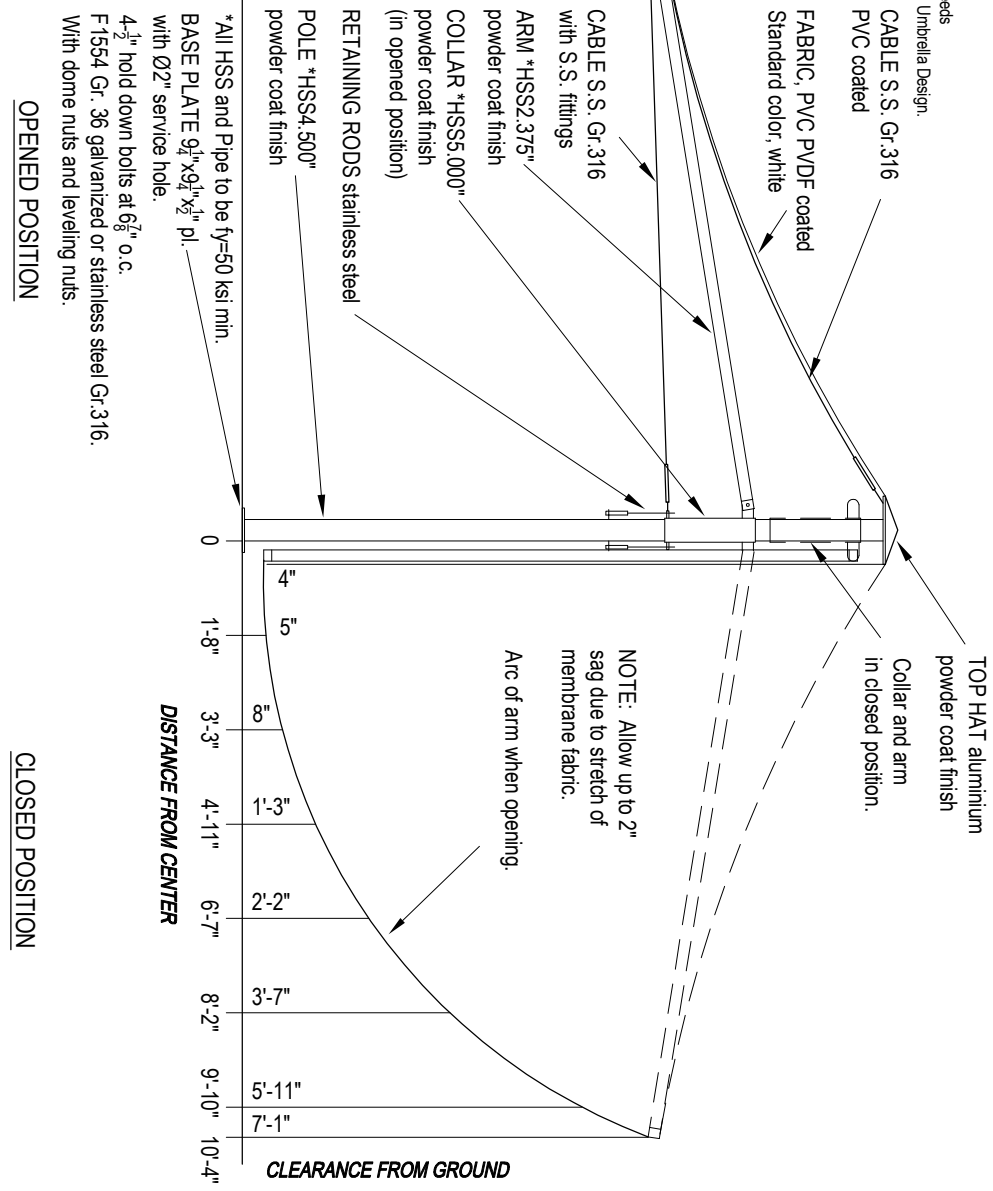
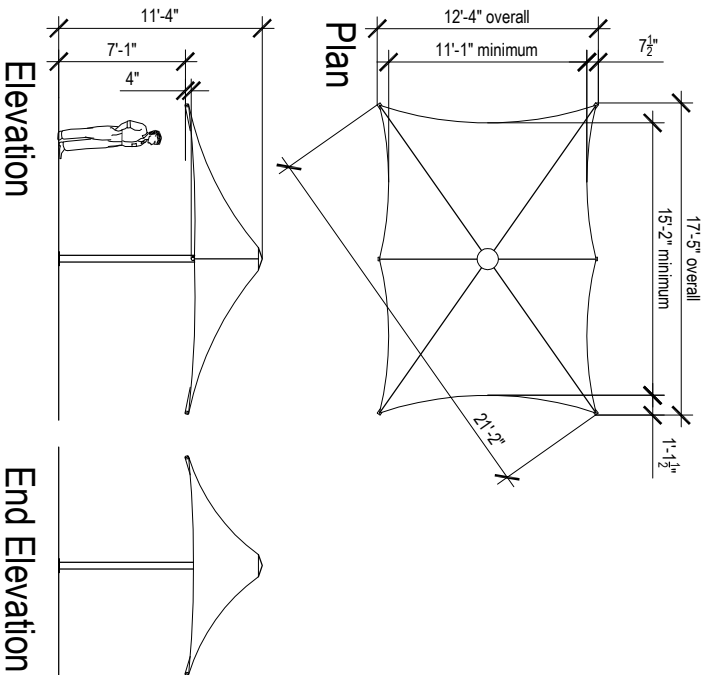


**CENTRA RECTANGULAR 17'-5" - CR53**

Designed to 90mph, Exp B  
 Rated when umbrella is fully erected.  
 Umbrella weight: 254 lb.

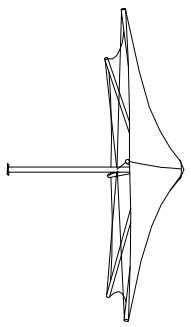
Overall dimensions represent clearance dimensions for the complete umbrella. Membrane dimensions differ, depending on variations in tensioning and fabrication. All dimensions are nominal and have a tolerance of +/- .2"

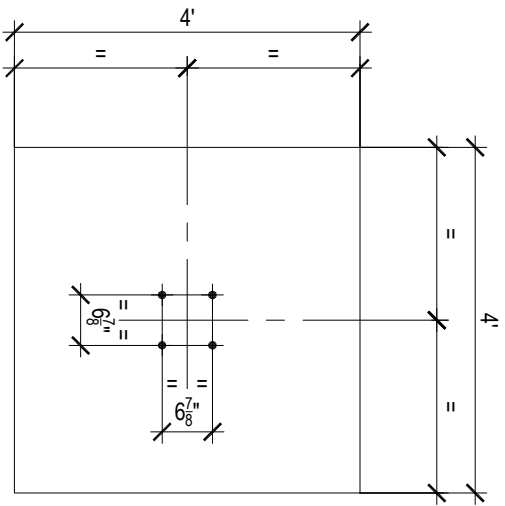
Note : The umbrellas must be closed and tied before wind speeds reach gusts of 60mph (100km/h). Refer note on Specification - Umbrella Design.



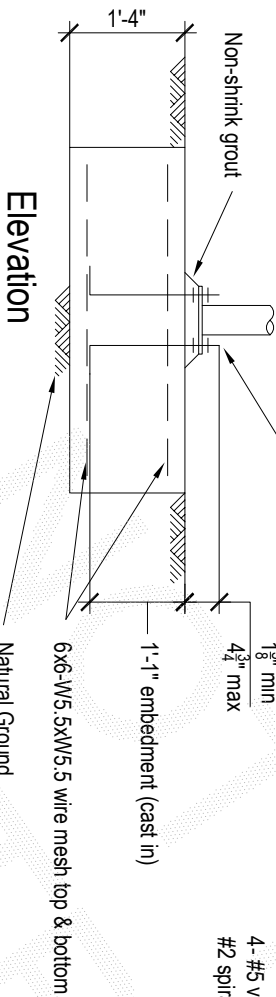
\*All HSS and Pipe to be fy=50 ksi min.  
 BASE PLATE 9 1/4"x9 1/4"x2 1/4" pl. with Ø2" service hole.  
 4-1/2" hold down bolts at 6 7/8" o.c.  
 F 1554 Gr. 36 galvanized or stainless steel Gr.316.  
 With dome nuts and leveling nuts.

**17'-5" Center Support Rectangular Umbrella**  
**Centra - Model CR53**

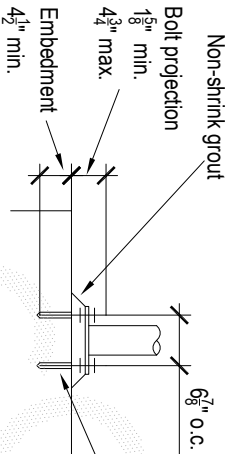




Plan

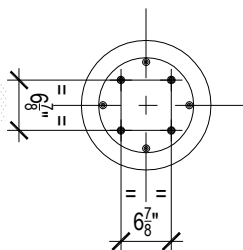


Elevation

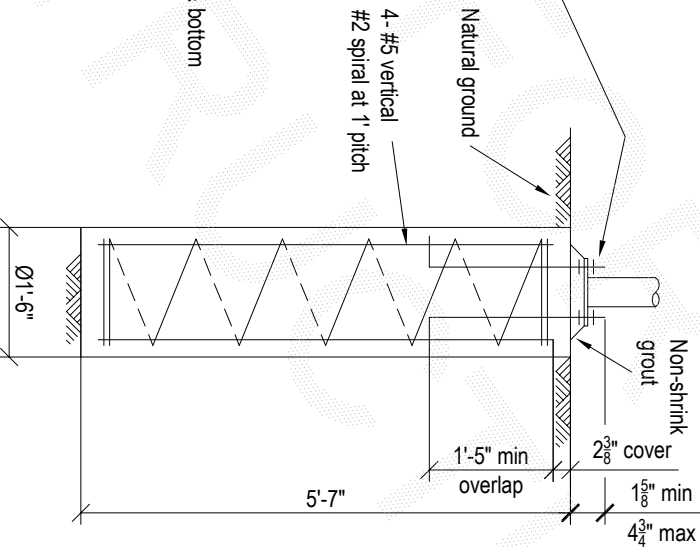


4- $\frac{1}{2}$ " H.D. bolts to be threaded rod F1554 Gr. 36 hot dipped galvanized, or stainless steel Gr.316. Supplied with nuts, washers and leveling nuts. Chemical anchors, at  $6\frac{7}{8}$ " x  $6\frac{7}{8}$ " centers to be 'Hilti HVU', or engineer approved equivalent, and to be installed in accordance with the manufacturer's instructions. Hole to be clean and dry at time of installation.

## CR53 - Pad Footing



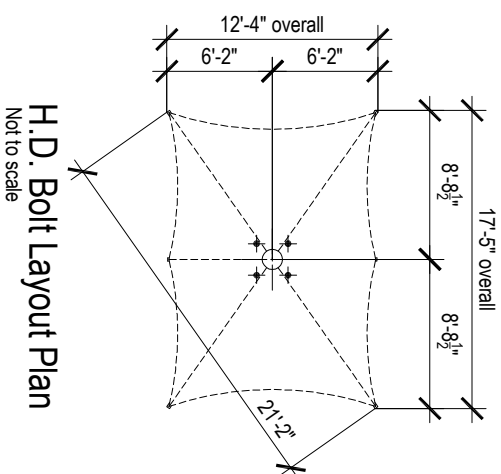
Plan



Elevation

- Notes:**
- Designed to 90mph, Exp B
  - Assumed soil conditions:
  - Pad - bearing capacity 14.5 psi
  - Pier - cu=7.25 psi (stiff clay)
  - Minimum  $2\frac{3}{8}$ " cover to all reinforcement
  - Concrete strength - f'c 3600 psi
  - $\frac{3}{4}$ " aggregate size
  - Slump  $2\frac{1}{2}$ "
- Anchor bolt location tolerances per Australian Standard AS 4800-1998**
- 3mm for anchor bolt centers within an anchor bolt group.
  - 6mm for adjacent anchor bolt group centers.
  - Maximum accumulation of 6mm per 30m not to exceed a total of 25mm.
  - 6mm from anchor bolt group center to column line center.

## CR53 - Pier Footing



H.D. Bolt Layout Plan  
Not to scale

## Chemical Anchor Detail

Figured dimensions take precedence. Do not scale.  
© Birdair Inc. This drawing must not be copied, retained or used without permission

Centra Model CR53  
Architectural Umbrellas

Birdair Inc.  
Footing Detail

FD-CR53-08\_10

www.birdairumbrellas.com  
sales@birdairumbrellas.com

