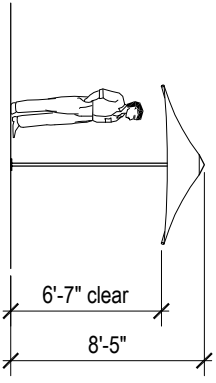


**Plan**



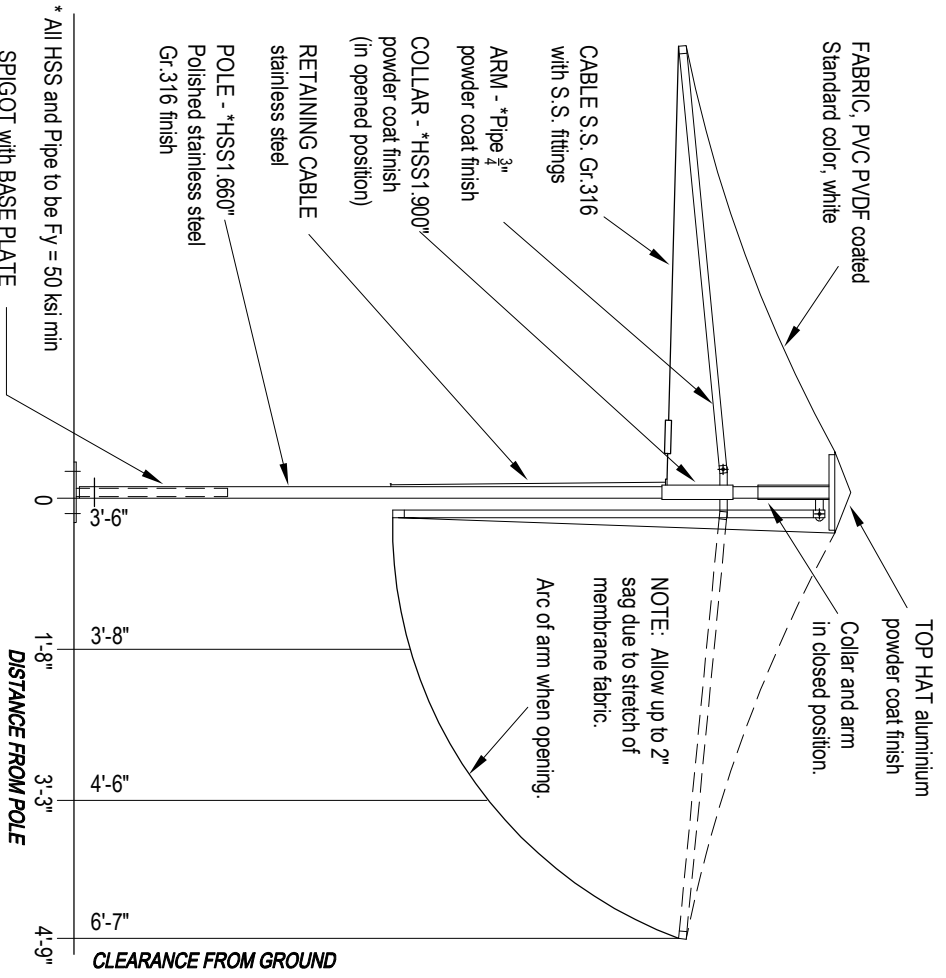
**Elevation**

**PORTA SQUARE 6'-11" - P21**

Wind Rating: Not rated.  
 Close up when wind exceeds 22 mph  
 Umbrella weight: 44 lbs  
 Spigot weight: 7 lbs

Overall dimensions represent clearance dimensions for the complete umbrella. Membrane dimensions differ, depending on variations in tensioning and fabrication. All Dimensions are nominal and have a tolerance of +/- 2".

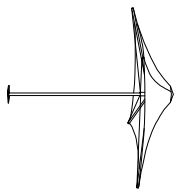
Note : The umbrellas must be closed and tied before wind speeds reach gusts of 60mph (100km/h) Refer note on Specification - Umbrella Design

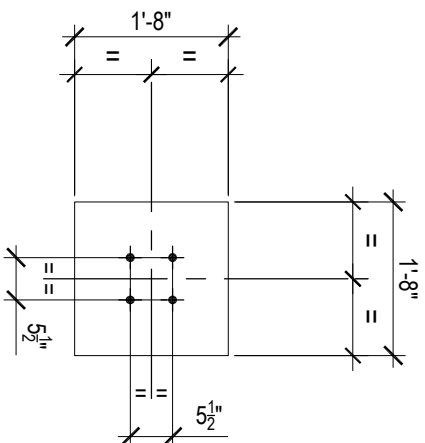


**OPENED POSITION**

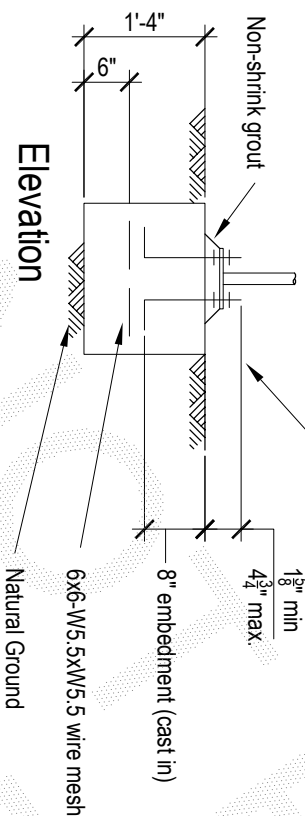
**6'-11" Portable Umbrella  
 Porta - Model P21**

**CLOSED POSITION**



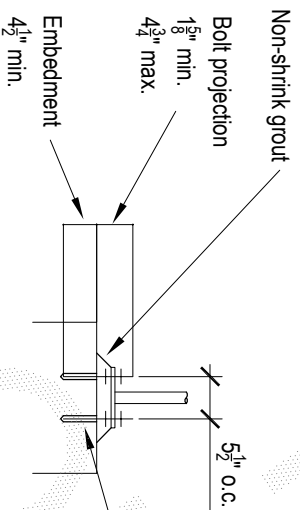


Plan



Elevation

## P21 - Pad Footing



## Chemical Anchor Detail

- 4- 1/2" F1554 Gr. 36 galvanized H.D. bolts with nuts and leveling nuts - 4" hook to suit level of top of paving, tiling, etc
- 1 5/8" min
- 4 3/4" max.
- 8" embedment (cast in)
- 6x6-W5.5xW5.5 wire mesh
- Natural Ground
- Non-shrink grout
- 1'-4"
- 5 1/2"
- Non-shrink grout
- Bolt projection 1 5/8" min., 4 3/4" max.
- Embedment 4 1/2" min.
- 5 1/2" o.c.
- 4- 1/2" H.D. bolts to be threaded rod F1554 Gr. 36 hot dipped galvanized, or stainless steel Gr.316. Supplied with nuts, washers and leveling nuts.
- Chemical anchors, at 5 1/2" x 5 1/2" centers to be 'Hilti HVU', or engineer approved equivalent, and to be installed in accordance with the manufacturer's instructions. Hole to be clean and dry at time of installation.

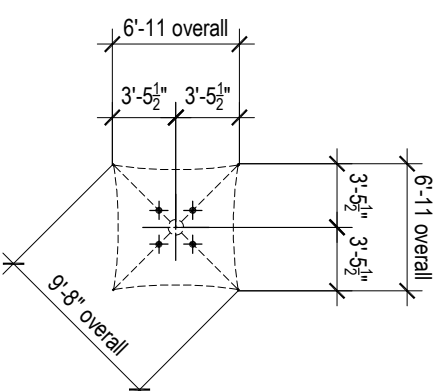
**Notes:**  
Not wind rated.

Assumed soil conditions:  
Pad - bearing capacity 14.5 psf  
Pier - cu=7.25 psf (stiff clay)

Minimum 2 3/8" cover to all reinforcement  
Concrete strength - f'c 3600 psi  
3/4" aggregate size  
Slump 2 1/2"

**Anchor bolt location tolerances per Australian Standard AS 4800-1998**

- 3mm for anchor bolt centers within an anchor bolt group.
- 6mm for adjacent anchor bolt group centers.
- Maximum accumulation of 6mm per 30m not to exceed a total of 25mm.
- 6mm from anchor bolt group center to column line center.



## H.D. Bolt Layout Plan

Not to scale