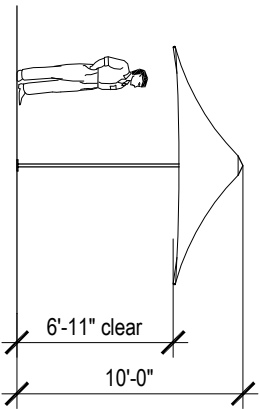


Plan



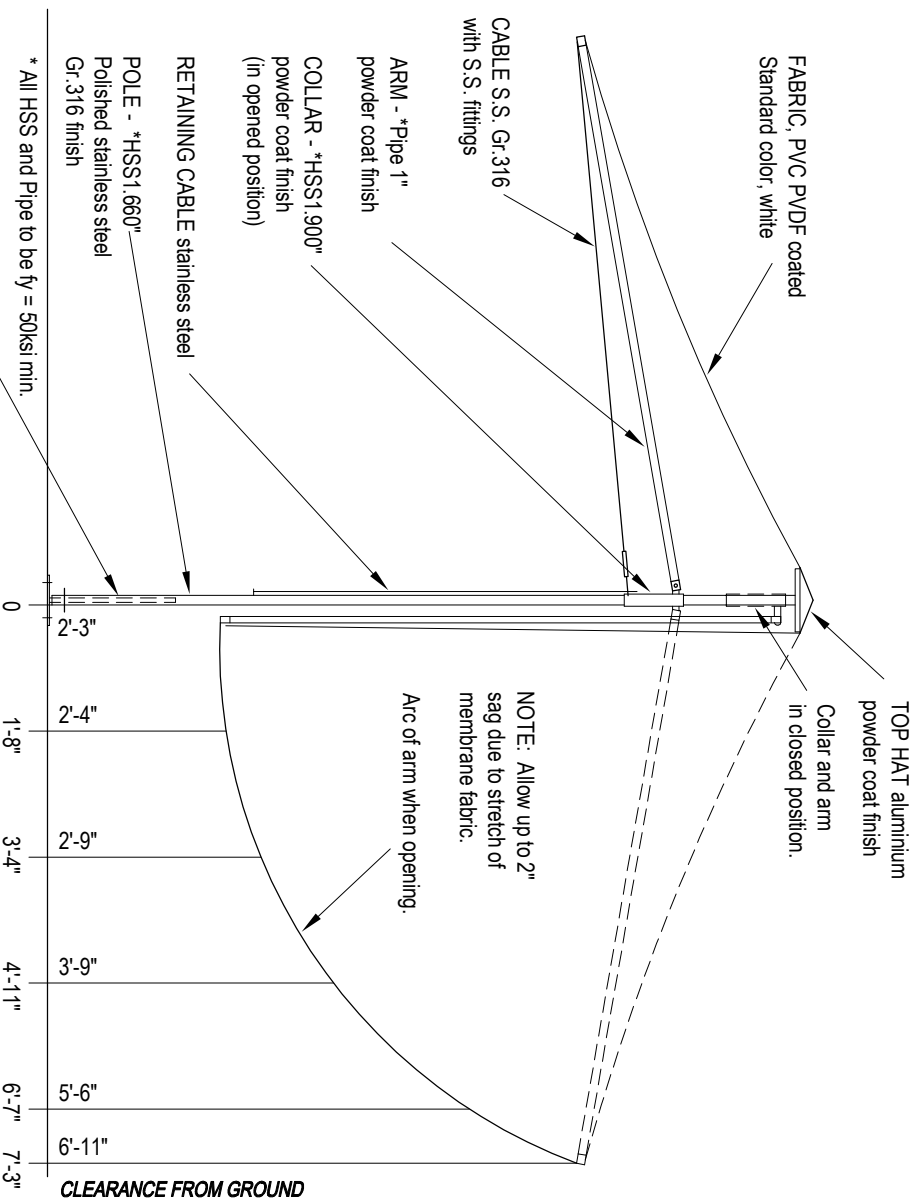
Elevation

**PORTA SQUARE 10'-6" - P32**

- Wind Rating: Not rated.
- Close up when wind exceeds 25 mph
- Umbrella weight: 66 lbs
- Spigot weight: 7 lbs

Overall dimensions represent clearance dimensions for the complete umbrella. Membrane dimensions differ, depending on variations in tensioning and fabrication. All dimensions are nominal and have a tolerance of +/- .2".

Note : The umbrellas must be closed and tied before wind speeds reach gusts of 60mph (100km/h) Refer note on Specification - Umbrella Design.

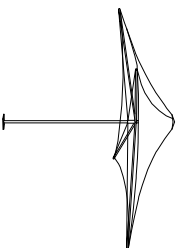


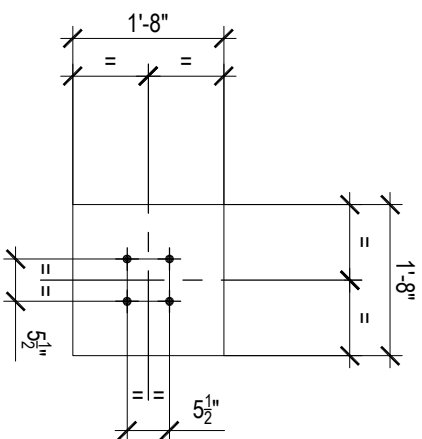
- \* All HSS and Pipe to be fy = 50ksi min.
- SPIGOT with BASE PLATE
- 7/8" x 7/8" x 1/2" pl.
- 4 - 1/2" hold down bolts at 5 1/2" o.c.
- F1554 Gr. 36 galvanized or stainless steel Gr.316.
- With dome nuts and beveling nuts.

**OPENED POSITION**

**CLOSED POSITION**

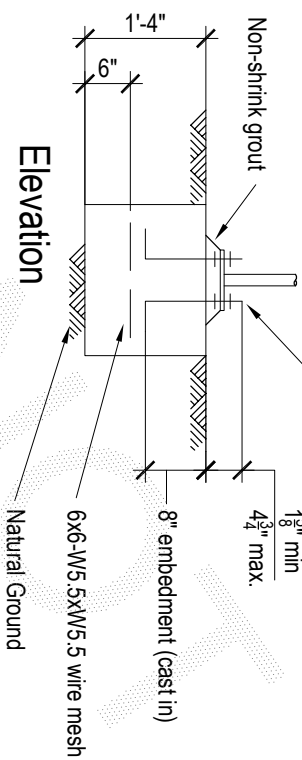
**10'-6" Portable Umbrella  
Porta - Model P32**





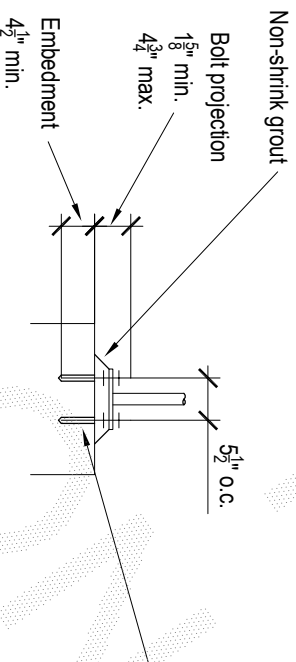
Plan

4- $\frac{1}{2}$ " F1554 Gr. 36 galvanized H.D. bolts with nuts and leveling nuts - 4" hook to suit level of top of paving, tiling, etc



Elevation

## P32 - Pad Footing



4- $\frac{1}{2}$ " H.D. bolts to be threaded rod F1554 Gr. 36 hot dipped galvanized, or stainless steel Gr.316. Supplied with nuts, washers and leveling nuts. Chemical anchors, at 5  $\frac{1}{2}$ " x 5  $\frac{1}{2}$ " centers to be "Hilti HVU", or engineer approved equivalent, and to be installed in accordance with the manufacturer's instructions. Hole to be clean and dry at time of installation.

## Chemical Anchor Detail

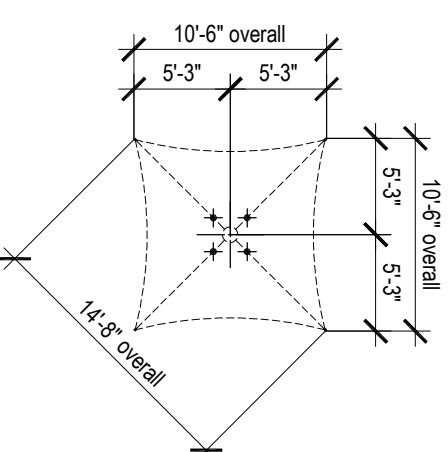
**Notes:**  
Not wind rated.

Assumed soil conditions:  
Pad - bearing capacity 14.5 psf  
Pier - cu=7.25 psf (stiff clay)

Minimum  $2\frac{3}{8}$ " cover to all reinforcement  
Concrete strength  $f'_c$  3600 psi  
 $\frac{3}{4}$ " aggregate size  
Slump  $2\frac{1}{2}$ "

**Anchor bolt location tolerances per Australian Standard AS 4800-1998**

- 3mm for anchor bolt centers within an anchor bolt group.
- 6mm for adjacent anchor bolt group centers.
- Maximum accumulation of 6mm per 30m not to exceed a total of 25mm.
- 6mm from anchor bolt group center to column line center.



H.D. Bolt Layout Plan  
Not to scale